

What are the metering parameters?



A Multifunction energy meter monitors and measures all the electrical parameters such as voltage, active power, apparent power, current, power factor, reactive power, Active energy, phase angle and so on.

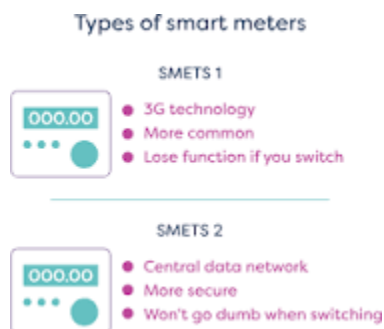
What are the parameters of a power meter?

The power meter has 2 input channels for measuring parameters including voltage, current, active power, power factor, frequency, and energy consumption in kWh. The power meter is used for the quick and precise measurement or analysis of parameters such as power consumption and quality.

What are the parameters of multifunction meter?

They are equipped to measure essential electrical parameters such as voltage, current, power factor, frequency, and energy consumption. They provide real-time data, enabling precise power quality assessment, load management, and energy efficiency.

Are there 2 types of smart meters?



There are two types of smart meter at present – known as SMETS 1 and SMETS 2, they represent the first and second generations of the technology (SMETS stands for 'Smart Metering Equipment Technical Specifications').