

I006 Online Test

Ref501

_____ provides the operation necessary to transform the sensor output into a form necessary to interface with other elements of process control lop.

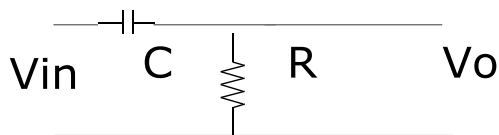
A	Analogue signal conditioning	B	Digital signal conditioning
C		D	
Answer			

Ref502

Wheatstone bridge is _____ basic signal conditioner.

A	Active	B	Passive
C		D	
Answer			

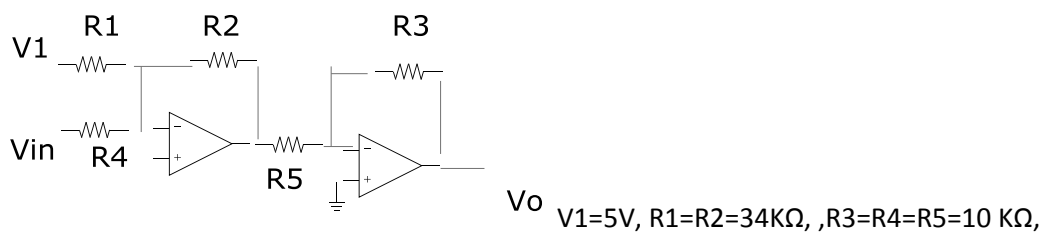
Ref503



This circuit is

A	Low pass filter	B	High pass filter
C	Band pass filter	D	Band stop filter
Answer			

Ref504



Vout for above circuit is

A	Vout= 1.7 Vin + 5	B	Vout = 3.4 Vin
C	Vout = 1.7 Vin	D	Vout= 3.4 Vin +5
Answer			

Ref505

Vout = (1 + R2/R1) Vin is an equation for

A	Non inverting amplifier	B	Inverting amplifier
C	Emitter follower	D	Summing amplifier
Answer			

Ref506

The equation $F1/A1 = F2/A2$ belongs to

A	Boyle's law	B	Charle's law
C	Bernaulli's law	D	Pascal's law
Answer			

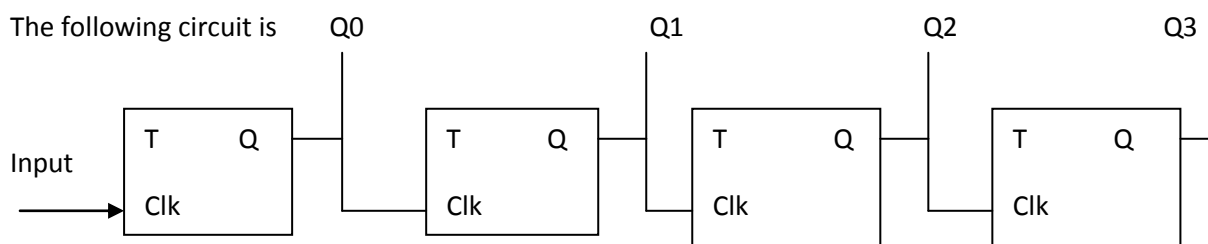
Ref507

TTL 74LS 193 A CMOS 4035 ICs are used for

A	Parallel in / Parallel out function	B	Serial in / Parallel out function
C	Parallel in / Serial out function	D	Serial in / Serial out function
Answer			

Ref508

The following circuit is



A	Up counter	B	Down counter
C	Asynchronous counter	D	Synchronous counter
Answer			

Ref509

4 bits ripple counter has a modulus of _____ outputs.

A	4	B	8
C	12	D	16
Answer			

Ref510

The number of data signal lines required for 7 segments display is

A	7	B	8
C	9	D	10
Answer			

Ref511

In display multiplexing, the switches are used to connect the selected binary value to_____.

A	Encoder	B	Analyzer
C	Decoder	D	Follower
Answer			

Ref512

To interface with high noise immunity industrial control system, which of device is to be used?

A	TTL	B	DTL
C	HTL	D	ECL
Answer			

Ref513

Events occur after the previous event is completed. The device is _____.

A	Combinational logic	B	Sequential logic
C	Synchronous logic	D	Asynchronous logic
Answer			

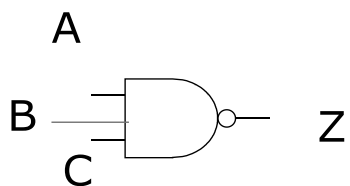
Ref514

This table stands for

A	B	C
0	0	1
0	1	0
1	0	0
1	1	0

A	AND	B	OR
C	NOT	D	NOR
Answer			

Ref515



A	$Z = A B C$	B	$Z = A+B +C$
C	$Z = A B C$	D	
Answer			

Ref516

$45_{10} =$

A	101101_2	B	100101_2
C	111001_2	D	101010_2
Answer			

