

H025+H026+I006 Online Test

Ref451

Differential amplifier can _____ noise signals that are common to both inputs.

A	accept	B	reject
C	rectify	D	reduce
Answer			

Ref453

A transducer consists of _____ & it's associated circuitry to produce an output signal

A	Rectifier	B	Sensor
C	Regulator	D	Divider
Answer			

Ref455

The strain gauge is used for

A	Speed measurement	B	Temperature measurement
C	Force measurement	D	Position measurement
Answer			

Ref457

The water supply to water tank is an example of

A	Open loop control	B	Closed loop control
		D	
Answer			

Ref459

Reset function is

A	Proportional control	B	Integral control
C	Derivative control	D	PID control
Answer			

Ref461

In one shot or monostable circuit, delay time equation is

A	$T = 1.1 R_a C$	B	$T = 2 R_a C$
C	$T = 3 R_a C$	D	
Answer			

Ref463

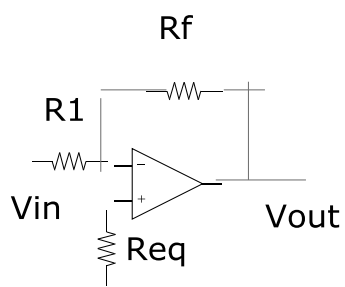
The following equation is used for

$$V_o = - \left[(R_f / R_1) V_1 + (R_f / R_2) V_2 + (R_f / R_3) V_3 \right]$$

A	Summing amplifier	B	Differential amplifier
C	Cascade amplifier	D	
Answer			

Ref465

In the following circuit , Req is



A	Bias voltage offset resistor	B	Bias current offset resistor
C	Feedback resistor	D	
Answer			

Ref467

Noise gain is

A	$(R_f/R_1) + 1$	B	$(R_1/R_f)+1$
C	R_1/R_f	D	R_f/R_1
Answer			

Ref469

The slew rate of 741 Op is $0.5V/\mu s$. Find maximum frequency for 20V p-p sine wave

A	3KHZ	B	10KHZ
C	7.96 KHZ	D	20 KHZ
Answer			

Ref471

Phase shift oscillator frequency is

A	$f_o = 1/ 15.4 RC$	B	$f_o = 1/ 30 RC$
C	$f_o = 1/ 60 RC$	D	$f_o = 1/ 100 RC$
Answer			

Ref472

The Wien bridge amplifier frequency is

A	$f_o = 1/ 3.14 RC$	B	$f_o = 1/ 6.28RC$
C	$f_o = 6.28 RC$	D	$f_o = 1/ RC$
Answer			

